

DESCRIPTION:
 A tract of land lying in Sections 23, 24, 25 and 26, Township 55 North, Range 13 West, Randolph County, Missouri, being more particularly described as follows:

Beginning at the Southwest corner of said Section 23; thence North 02 degrees 51 minutes 54 seconds East, a distance of 2644.90 feet to the West Quarter corner of said Section 23; thence South 86 degrees 01 minute 18 seconds East, a distance of 1347.43 feet to the Northeast corner of the Northwest Quarter of the Southwest Quarter of said Section 23; thence South 85 degrees 39 minutes 29 seconds East, a distance of 1343.11 feet to the center of said Section 23; thence North 02 degrees 42 minutes 08 seconds East, a distance of 1324.56 feet to the Northwest corner of the Southwest Quarter of the Northeast Quarter of said Section 23; thence South 85 degrees 27 minutes 21 seconds East, a distance of 1350.41 feet to the Northeast corner of the Southwest Quarter of the Northeast Quarter of said Section 23; thence South 02 degrees 44 minutes 17 seconds West, a distance of 1322.72 feet to the Southeast corner of the Southwest Quarter of the Northeast Quarter of said Section 23; thence South 85 degrees 31 minutes 07 seconds East, a distance of 1349.54 feet to the East Quarter corner of said Section 23; thence along the Quarter Section line, South 85 degrees 57 minutes 19 seconds East, a distance of 489.24 feet to the center of Mud Creek; thence along the meanders of Mud Creek the following courses and distances, South 25 degrees 19 minutes 23 seconds East, a distance of 184.55 feet; thence South 38 degrees 24 minutes 32 seconds East, a distance of 427.24 feet; thence North 87 degrees 14 minutes 44 seconds East, a distance of 155.53 feet; thence North 47 degrees 12 minutes 06 seconds East, a distance of 142.99 feet; thence South 40 degrees 28 minutes 57 seconds East, a distance of 260.81 feet; thence South 19 degrees 27 minutes 55 seconds West, a distance of 150.72 feet; thence South 88 degrees 03 minutes 31 seconds West, a distance of 159.71 feet; thence South 52 degrees 28 minutes 39 seconds West, a distance of 235.53 feet; thence South 32 degrees 04 minutes 16 seconds East, a distance of 135.22 feet; thence South 77 degrees 34 minutes 00 seconds East, a distance of 80.03 feet; thence South 69 degrees 28 minutes 49 seconds East, a distance of 290.23 feet to the East line of the West Half of the Southwest Quarter of said Section 24; thence along said East line, South 03 degrees 12 minutes 27 seconds West, a distance of 1572.54 feet to the Southeast corner of said West Half; thence along the South line of said Section 24, South 86 degrees 20 minutes 15 seconds East, a distance of 1037.55 feet to the centerline of County Road #45; thence along said centerline the following courses and distances; South 24 degrees 53 minutes 54 seconds West, a distance of 361.67 feet; thence along the arc of a curve to the left having a radius of 330.00 feet, a distance of 169.97 feet; thence South 04 degrees 36 minutes 43 seconds East, a distance of 135.65 feet; thence South 00 degrees 38 minutes 31 seconds East, a distance of 122.59 feet; thence South 03 degrees 50 minutes 01 seconds West, a distance of 279.44 feet; thence South 12 degrees 18 minutes 55 seconds West, a distance of 107.62 feet; thence along the arc of a curve to the right, having a radius of 210.00 feet, a distance of 254.33 feet to the South line of the North Half of the Northwest Quarter of said Section 25; thence along said South line, North 86 degrees 22 minutes 44 seconds West, a distance of 2043.15 feet to the Southeast corner of the Northeast Quarter of the Northeast Quarter of said Section 26; thence North 85 degrees 19 minutes 38 seconds West, a distance of 1350.47 feet to the Southwest corner of the Northeast Quarter of the Northeast Quarter of said Section 26; thence North 02 degrees 44 minutes 33 seconds East, a distance of 1322.50 feet to the Northwest corner of the Northeast Quarter of the Northeast Quarter of said Section 26; thence North 85 degrees 18 minutes 11 seconds West, a distance of 1349.97 feet to the South Quarter corner of said Section 23; thence North 86 degrees 06 minutes 50 seconds West, a distance of 2693.92 feet to the POINT OF BEGINNING, containing 547.15 acres, more or less.

EXCEPTIONS:
 That portion conveyed to the Missouri Department of Transportation for Missouri Route FF.

That portion conveyed to Randolph County in Book 317H, at Page 196 for additional right-of-way along county road #45 at Mud Creek.

That portion currently being used for public roadway.



656 SCALE: 1" = 400'

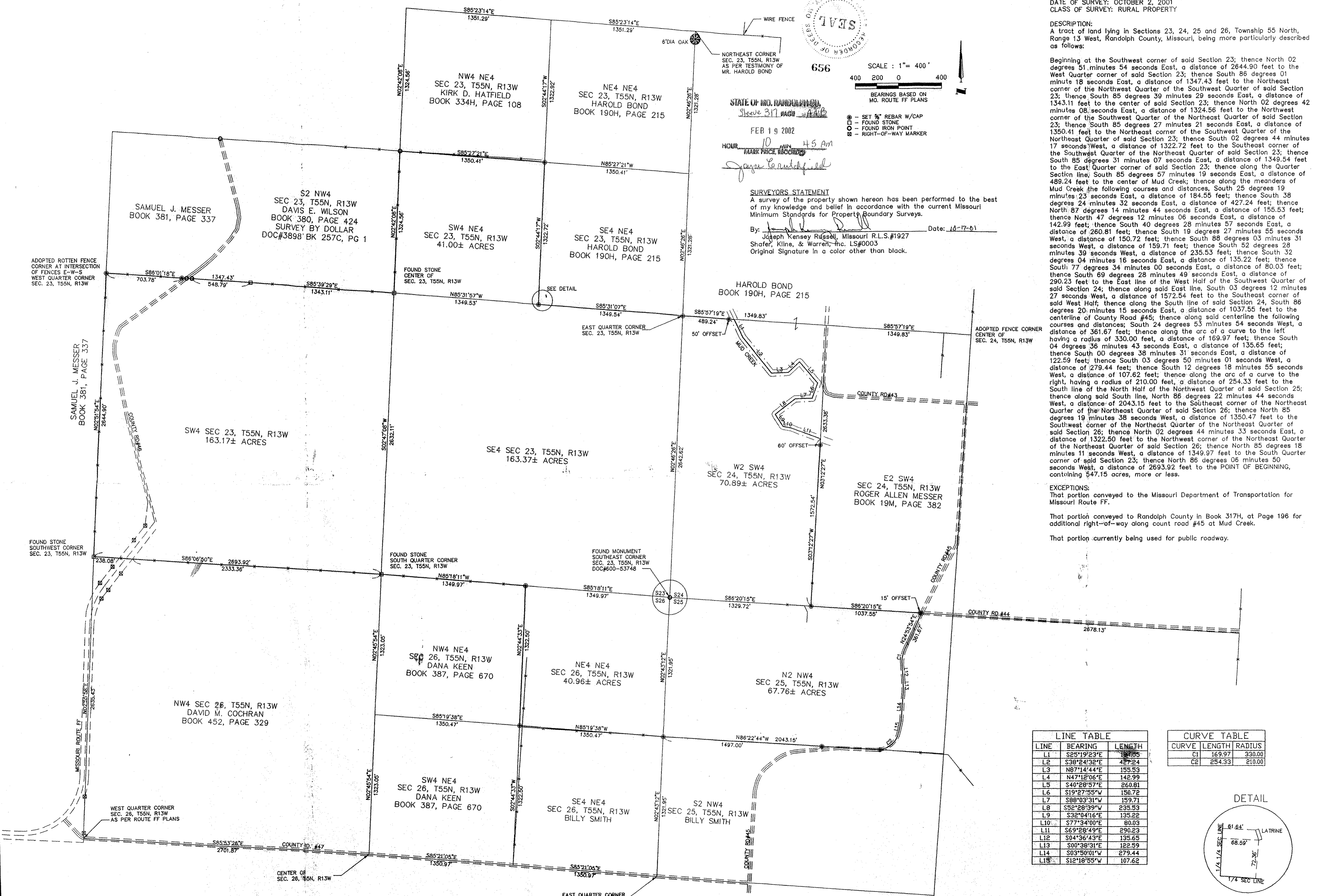
STATE OF MISSOURI
 FEB 19 2002
 HOUR 10:45 AM
 MARK PRICE RECORDED
 Joseph Kensey Russell

SURVEYORS STATEMENT
 A survey of the property shown hereon has been performed to the best of my knowledge and belief in accordance with the current Missouri Minimum Standards for Property Boundary Surveys.
 By: Joseph Kensey Russell, Missouri R.L.S.#1927
 Shafer, Kline, & Warren, Inc. LS#0003
 Original Signature in a color other than black.
 Date: 10-17-01

- BEARINGS BASED ON MO. ROUTE FF PLANS
- - SET ¾" REBAR W/CAP
 - - FOUND STONE
 - - FOUND IRON POINT
 - ⊕ - RIGHT-OF-WAY MARKER

AUTOCAD INFORMATION BLOCK

DATE:	10/10/01
BY:	JHS
REF DWG:	NONE
REF DWG:	NONE
REF DWG:	NONE

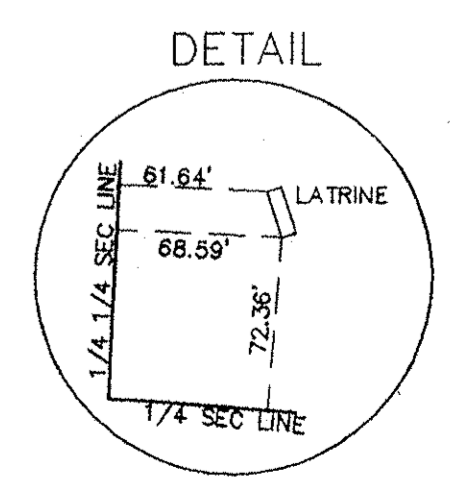


LINE TABLE

LINE	BEARING	LENGTH
L1	S25°19'23"E	18.85
L2	S38°24'32"E	42.24
L3	N87°14'44"E	155.53
L4	N47°12'06"E	142.99
L5	S40°28'57"E	260.81
L6	S19°27'55"W	150.72
L7	S88°03'31"W	159.71
L8	S52°28'39"W	235.53
L9	S32°04'16"E	135.22
L10	S77°34'00"E	80.03
L11	S69°28'49"E	290.23
L12	S04°36'43"E	135.65
L13	S00°38'31"E	122.59
L14	S03°50'01"W	279.44
L15	S12°18'55"W	107.62

CURVE TABLE

CURVE	LENGTH	RADIUS
C1	169.97	330.00
C2	254.33	210.00



BOY SCOUTS OF AMERICA-CAMP THUNDERBIRD BOUNDARY RETRACEMENT
SECTIONS 23, 24, 25 & 26, T55N, R13W RANDOLPH COUNTY, MISSOURI

Chillicothe, MO
 Kansas City, MO
 Overland Park, KS
 Iola, KS

OTHER OFFICE LOCATIONS:
 IOLA, KS
 OVERLAND PARK, KS

DESIGNED BY: JHS
 DRAWN BY: JHS
 CHECKED BY: JKR
 ISSUE DATE: 10-17-01
 JOB NO.: 200688

REVISIONS

BY: APP
 DATE: 10-17-01

SHAFFER, KLINE & WARREN, INC.
 215 N. Rollins P.O. Box 366, Macon, MO 63552
 660/385-6441 FAX: 660/385-6614

CIVIL ENGINEERS • ELECTRICAL ENGINEERS • MECHANICAL ENGINEERS • LANDSCAPE ARCHITECTS • LAND SURVEYORS • LAND PLANNERS

SHEET NO. 1 OF 1
 200688

COPYRIGHT © 2001-SHAFFER, KLINE & WARREN, INC.